

## CERTIFICADO DE CALIBRACIÓN / CALIBRATION CERTIFICATE

**INNOVATECIS CIA LTDA**

General José María Guerrero N69-170 y Alfonso del Hierro

Quito, Ecuador

(+593) 02 6040 607

innovatec@innovatec.com.ec

**Certificado No. (Certificate #):** 59973

**Fecha de Recepción (Reception Date):** 2025-08-14

**Fecha de Calibración (Calibration Date):** 2025-08-14

**Próxima Fecha de Calibración (Calibration Due):** 2026-08

**Fecha de Emisión (Emission Date):** 2025-08-14

**Cliente (Client):** INTEGRATED LOGISTICS SERVICES SERVILOGISTICS S.A.  
DE LAS AVELLANAS E7-40 Y DE LOS CIPRESES, QUITO (PICHINCHA), ECUADOR

**Información del Instrumento (Instrument Information)**
**Equipo (Instrument):** Controlador de Temperatura

**Marca (Brand):** FULLGAUGE

**Modelo (Model):** MT543E Plus/06

**Serie (Serial #):** 85302-0128-2315

**Código (Code):** CTD-100

**Ubicación:**  
(Location):

PRECAM-03-UIO12

**Lugar de Calibración:**  
(Place of Calibration):

 In Situ  
In Situ

**Int. de Medición:**

(-50 a 200) °C

**División de escala:**  
(Resolution)

0.1 °C

**Datos de Calibración (Calibration Info)**
**Procedimiento (Procedure):** INN-PC-02

**Condiciones Ambientales (Environmental Conditions)**
**Temperatura (Temp):** (20.4 ± 21.1) °C

**Humedad (Humidity):** (57.7 ± 64.8) %HR

**Trazabilidad (Traceability Info)**

| Patrón (Standard) | Marca (Brand) | Cert. # | Última Calibración (Last Cal.) | Período (Period) |
|-------------------|---------------|---------|--------------------------------|------------------|
| Datalogger        | Govee         | 54336   | 2025-03-18                     | 1 año            |

**Resultados (Results)**

| Nominal (Nominal) | Patrón (Standard) | UBP (UUT) | Error (Error) | EMP (MPE) | Incertidumbre (Uncertainty) |
|-------------------|-------------------|-----------|---------------|-----------|-----------------------------|
| 0 °C              | 0.57 °C           | 0.7 °C    | 0.13 °C       | ± 0.5 °C  | ± 0.33 °C                   |
| 8 °C              | 8.47 °C           | 8.3 °C    | -0.17 °C      | ± 0.5 °C  | ± 0.84 °C                   |
| 16 °C             | 15.87 °C          | 15.8 °C   | -0.1 °C       | ± 0.5 °C  | ± 0.84 °C                   |

El presente Certificado de Calibración posee la trazabilidad en esta magnitud a través del Patrón Nacional, de la realización de la unidad de medida en el NPL, NIST, u otro Laboratorio Nacional reconocido al Sistema Internacional de Medidas. La calibración fue realizada bajo un Sistema de Gestión de Laboratorio conforme a la Norma ISO/IEC 17025:2017. Los resultados y su incertidumbre reportada con un nivel de confianza de K=2, 95% son relacionados a este instrumento y en el tiempo que se realizó las medidas. Este Laboratorio no se responsabiliza de los perjuicios que pueda ocasionar el uso inadecuado del instrumento calibrado. La reproducción parcial es prohibida, la reproducción total deberá hacerse con la autorización escrita aprobada por INNOVATEC Industrial Solutions. *This Certificate of Calibration provides traceability of measurement through National Standards through units of measurement realized at the NPL, NIST or other recognized National Standard Laboratories to the International System of Units. The calibration was performed under a Laboratory Management System in accordance with the ISO/IEC 17025:2017 Standard. The results and the reported uncertainty at a confidence level of K=2, 95% are related only to this instrument and at the time of measurement. This Laboratory is not responsible for any damages that may result from improper use of the calibrated instrument. Partial reproduction is forbidden, the total reproduction must have an approved written authorization by INNOVATEC Industrial Solutions.*

**Comentarios:** Ninguno  
*Comments*

**Calibrado por:** Jonathan Fonseca  
*Calibrated by:*

**Aprobado por:**  
*Approved by:*

Certificado No.: 59973      Equipo (Instrument): Controlador de Temperatura  
 Fecha de Calibración: 2025-08-14      Marca (Brand): FULLGAUGE

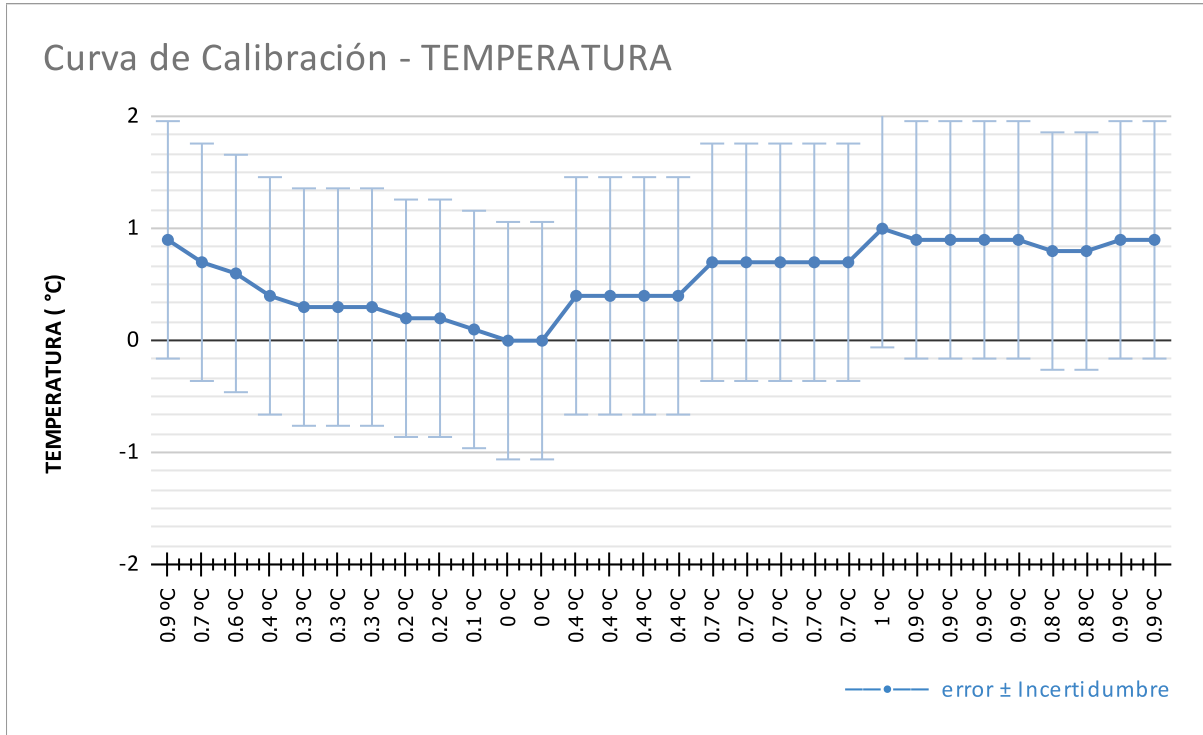
Tabla 1: Lecturas de la Temperatura

| Hora            | Patrón          | UBP            | Error   | Patrón | UBP    | Error   | Patrón  | UBP     | Error   |
|-----------------|-----------------|----------------|---------|--------|--------|---------|---------|---------|---------|
| 12:34:00 AM     | 0.9 °C          | 1 °C           | 0.1 °C  | 8.8 °C | 8.7 °C | -0.1 °C | 16.2 °C | 16 °C   | 0.2 °C  |
| 12:35:00 AM     | 0.7 °C          | 1 °C           | 0.3 °C  | 8.6 °C | 8.7 °C | 0.1 °C  | 16 °C   | 16 °C   | 0 °C    |
| 12:36:00 AM     | 0.6 °C          | 1 °C           | 0.4 °C  | 8.5 °C | 8.7 °C | 0.2 °C  | 15.9 °C | 16 °C   | -0.1 °C |
| 12:37:00 AM     | 0.4 °C          | 1 °C           | 0.6 °C  | 8.3 °C | 8.7 °C | 0.4 °C  | 15.7 °C | 16 °C   | -0.3 °C |
| 12:38:00 AM     | 0.3 °C          | 0.9 °C         | 0.6 °C  | 8.2 °C | 8.7 °C | 0.5 °C  | 15.6 °C | 16 °C   | -0.4 °C |
| 12:39:00 AM     | 0.3 °C          | 0.9 °C         | 0.6 °C  | 8.2 °C | 8.7 °C | 0.5 °C  | 15.6 °C | 16 °C   | -0.4 °C |
| 12:40:00 AM     | 0.3 °C          | 0.9 °C         | 0.6 °C  | 8.2 °C | 8.6 °C | 0.4 °C  | 15.6 °C | 16 °C   | -0.4 °C |
| 12:41:00 AM     | 0.2 °C          | 0.9 °C         | 0.7 °C  | 8.1 °C | 8.6 °C | 0.5 °C  | 15.5 °C | 16 °C   | -0.5 °C |
| 12:42:00 AM     | 0.2 °C          | 0.9 °C         | 0.7 °C  | 8.1 °C | 8.6 °C | 0.5 °C  | 15.5 °C | 15.9 °C | -0.4 °C |
| 12:43:00 AM     | 0.1 °C          | 0.9 °C         | 0.8 °C  | 8 °C   | 8.6 °C | 0.6 °C  | 15.4 °C | 15.9 °C | -0.5 °C |
| 12:44:00 AM     | 0 °C            | 0.9 °C         | 0.9 °C  | 7.9 °C | 8.6 °C | 0.7 °C  | 15.3 °C | 15.9 °C | -0.6 °C |
| 12:45:00 AM     | 0 °C            | 0.7 °C         | 0.7 °C  | 7.9 °C | 8.3 °C | 0.4 °C  | 15.3 °C | 15.9 °C | -0.6 °C |
| 12:46:00 AM     | 0.4 °C          | 0.7 °C         | 0.3 °C  | 8.3 °C | 8.3 °C | 0 °C    | 15.7 °C | 15.9 °C | -0.2 °C |
| 12:47:00 AM     | 0.4 °C          | 0.7 °C         | 0.3 °C  | 8.3 °C | 8.3 °C | 0 °C    | 15.7 °C | 15.9 °C | -0.2 °C |
| 12:48:00 AM     | 0.4 °C          | 0.7 °C         | 0.3 °C  | 8.3 °C | 8.3 °C | 0 °C    | 15.7 °C | 15.9 °C | -0.2 °C |
| 12:49:00 AM     | 0.4 °C          | 0.7 °C         | 0.3 °C  | 8.3 °C | 8.3 °C | 0 °C    | 15.7 °C | 15.7 °C | 0 °C    |
| 12:50:00 AM     | 0.7 °C          | 0.7 °C         | 0 °C    | 8.6 °C | 8.3 °C | -0.3 °C | 16 °C   | 15.7 °C | 0.3 °C  |
| 12:51:00 AM     | 0.7 °C          | 0.7 °C         | 0 °C    | 8.6 °C | 8.1 °C | -0.5 °C | 16 °C   | 15.7 °C | 0.3 °C  |
| 12:52:00 AM     | 0.7 °C          | 0.6 °C         | -0.1 °C | 8.6 °C | 8.1 °C | -0.5 °C | 16 °C   | 15.7 °C | 0.3 °C  |
| 12:53:00 AM     | 0.7 °C          | 0.6 °C         | -0.1 °C | 8.6 °C | 8.1 °C | -0.5 °C | 16 °C   | 15.7 °C | 0.3 °C  |
| 12:54:00 AM     | 0.7 °C          | 0.6 °C         | -0.1 °C | 8.6 °C | 8.1 °C | -0.5 °C | 16 °C   | 15.8 °C | 0.2 °C  |
| 12:55:00 AM     | 1 °C            | 0.6 °C         | -0.4 °C | 8.9 °C | 8.1 °C | -0.8 °C | 16.3 °C | 15.8 °C | 0.5 °C  |
| 12:56:00 AM     | 0.9 °C          | 0.6 °C         | -0.3 °C | 8.8 °C | 8.1 °C | -0.7 °C | 16.2 °C | 15.8 °C | 0.4 °C  |
| 12:57:00 AM     | 0.9 °C          | 0.3 °C         | -0.6 °C | 8.8 °C | 8.1 °C | -0.7 °C | 16.2 °C | 15.8 °C | 0.4 °C  |
| 12:58:00 AM     | 0.9 °C          | 0.3 °C         | -0.6 °C | 8.8 °C | 7.7 °C | -1.1 °C | 16.2 °C | 15.8 °C | 0.4 °C  |
| 12:59:00 AM     | 0.9 °C          | 0.3 °C         | -0.6 °C | 8.8 °C | 7.7 °C | -1.1 °C | 16.2 °C | 15.8 °C | 0.4 °C  |
| 1:00:00 AM      | 0.8 °C          | 0.3 °C         | -0.5 °C | 8.7 °C | 7.7 °C | -1 °C   | 16.1 °C | 15.5 °C | 0.6 °C  |
| 1:01:00 AM      | 0.8 °C          | 0.3 °C         | -0.5 °C | 8.7 °C | 7.7 °C | -1 °C   | 16.1 °C | 15.5 °C | 0.6 °C  |
| 1:02:00 AM      | 0.9 °C          | 0.3 °C         | -0.6 °C | 8.8 °C | 7.7 °C | -1.1 °C | 16.2 °C | 15.5 °C | 0.7 °C  |
| 1:03:00 AM      | 0.9 °C          | 0.3 °C         | -0.6 °C | 8.8 °C | 7.7 °C | -1.1 °C | 16.2 °C | 15.5 °C | 0.7 °C  |
| <b>PROMEDIO</b> | <b>0.57 °C</b>  | <b>0.7 °C</b>  |         |        |        |         |         |         |         |
| <b>MAX</b>      | <b>1 °C</b>     | <b>1 °C</b>    |         |        |        |         |         |         |         |
| <b>MIN</b>      | <b>0 °C</b>     | <b>0.3 °C</b>  |         |        |        |         |         |         |         |
| <b>PROMEDIO</b> | <b>8.47 °C</b>  | <b>8.3 °C</b>  |         |        |        |         |         |         |         |
| <b>MAX</b>      | <b>8.9 °C</b>   | <b>8.7 °C</b>  |         |        |        |         |         |         |         |
| <b>MIN</b>      | <b>7.9 °C</b>   | <b>7.7 °C</b>  |         |        |        |         |         |         |         |
| <b>PROMEDIO</b> | <b>15.87 °C</b> | <b>15.8 °C</b> |         |        |        |         |         |         |         |
| <b>MAX</b>      | <b>16.3 °C</b>  | <b>16 °C</b>   |         |        |        |         |         |         |         |
| <b>MIN</b>      | <b>15.3 °C</b>  | <b>15.5 °C</b> |         |        |        |         |         |         |         |

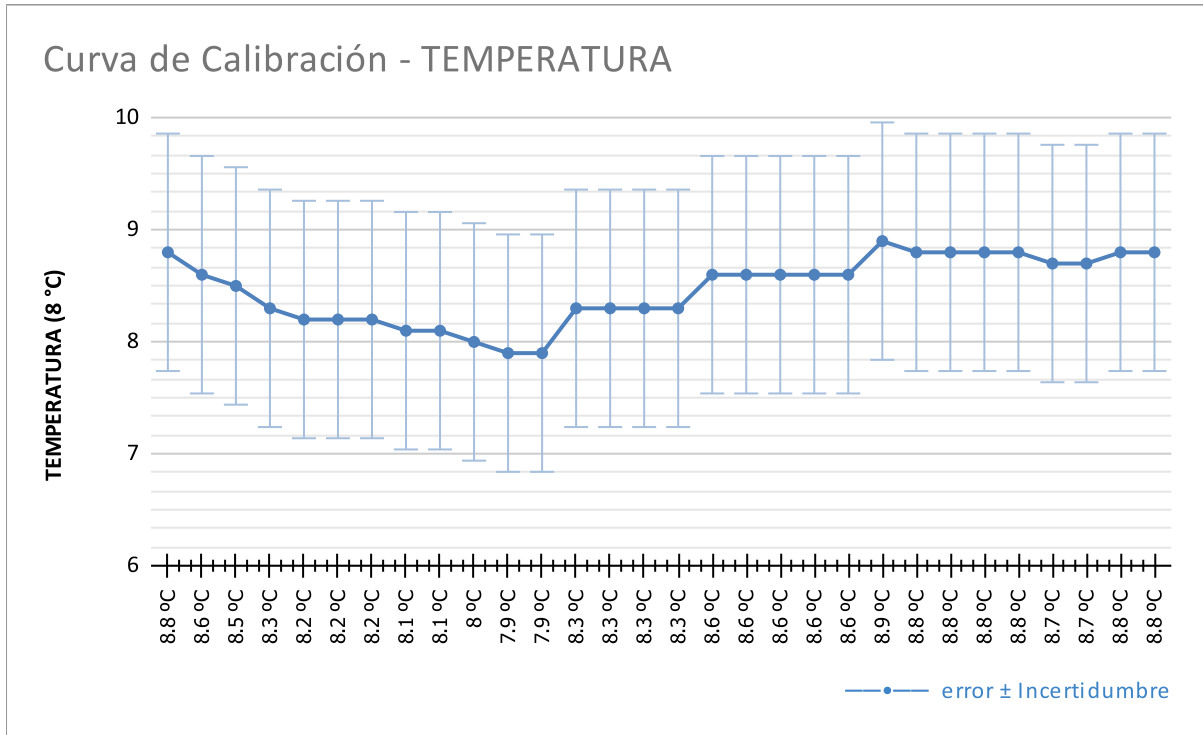
Certificado No.: 59973  
 Fecha de Calibración: 2025-08-14

Equipo (Instrument): Controlador de Temperatura  
 Marca (Brand): FULLGAUGE

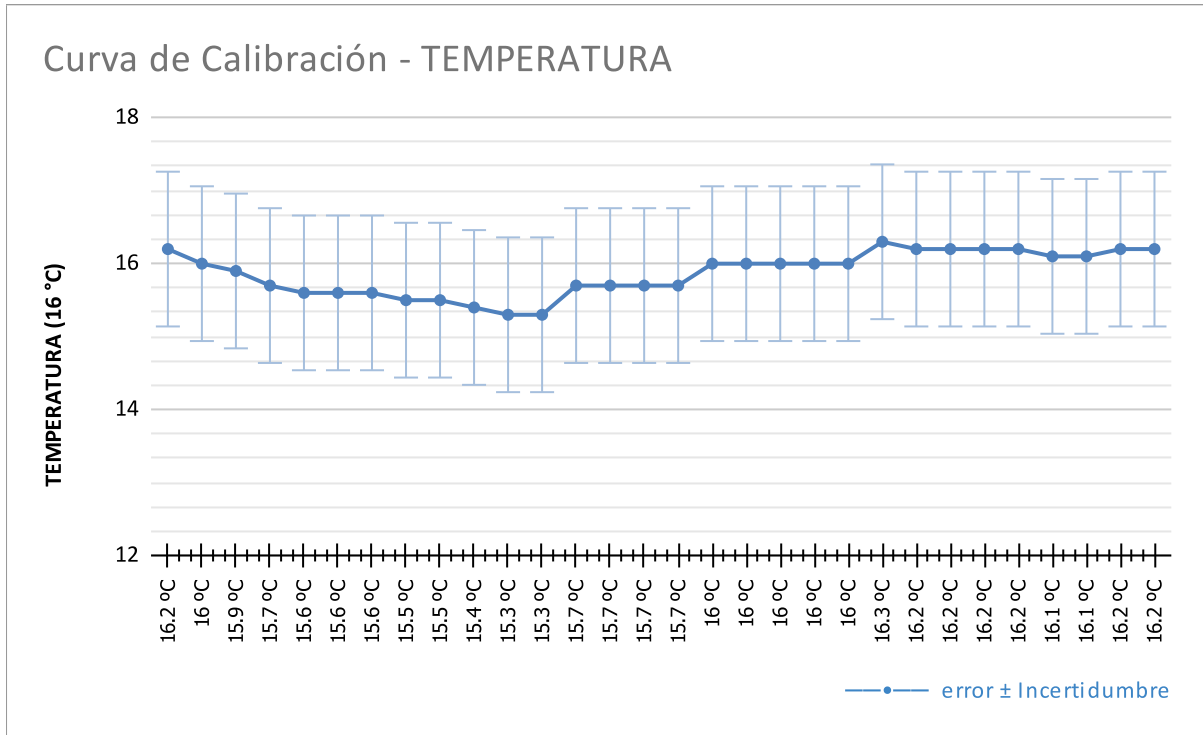
Curva de Calibración 0 °C



Curva de Calibración 8 °C



Curva de Calibración 16 °C



Fin del Certificado (End of Certificate)